

# Minsterley Drive



Traditional, 'bay-fronted' semi-detached property

In need of some updating

Very popular Acklam area close to schooling

Lengthy drive, garage, front and rear gardens

Spacious accommodation

**£159,995**

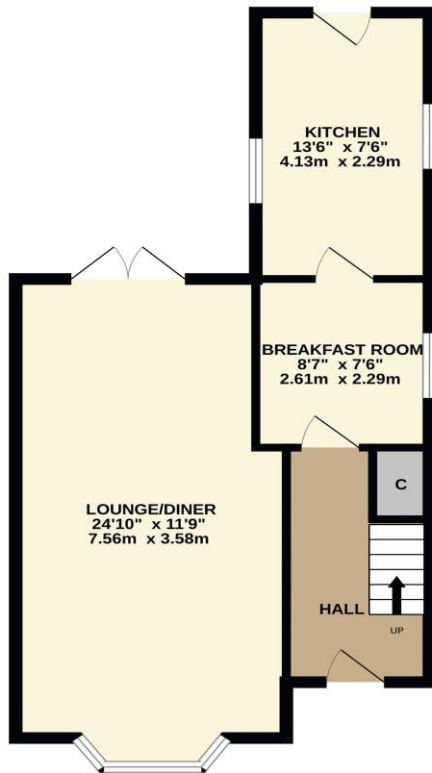




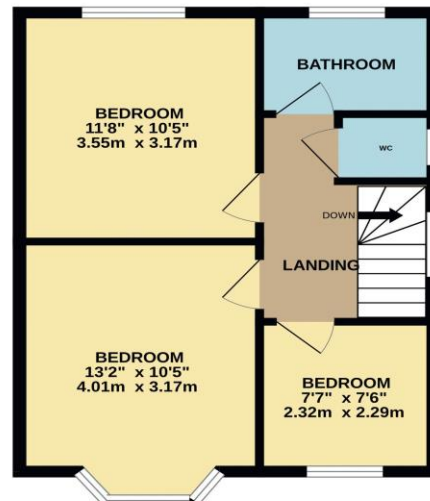
This traditional, 'bay-fronted' three bedroom property is especially spacious, and although in need of some obvious updating, offers a fantastic purchase opportunity. Situated within this especially popular Acklam area, close to 'highly thought of' schooling and amenities.

A lengthy side drive is block-paved and approaches the garage, with established front and rear gardens. Internally, the spacious ground floor delivers an entrance hall, large open-plan lounge/diner, breakfast room and rear kitchen. The first floor brings three bedrooms and the family bathroom. No forward chain.

GROUND FLOOR  
510 sq.ft. (47.4 sq.m.) approx.



1ST FLOOR  
425 sq.ft. (39.5 sq.m.) approx.



TOTAL FLOOR AREA : 936 sq.ft. (86.9 sq.m.) approx.

Whilst every attempt has been made to ensure the accuracy of the floorplan contained here, measurements of doors, windows, rooms and any other items are approximate and no responsibility is taken for any error, omission or mis-statement. This plan is for illustrative purposes only and should be used as such by any prospective purchaser. The services, systems and appliances shown have not been tested and no guarantee as to their operability or efficiency can be given.  
Made with Metropix ©2024



# “The Property Experts”



Tenure: Freehold

Council Tax Band: C

EPC Rating: TBC



AGENTS NOTE: Every care has been taken with the preparation of these details, but they are for general guidance only. Measurements and dimensions are approximate, and any fixtures or fittings shown in photography does not infer that they are to be included within the sale. The agent has not tested any appliances or supplies and professional verification of these should be sought prior to purchase if required. These particulars do not constitute a contract or part of a contract.